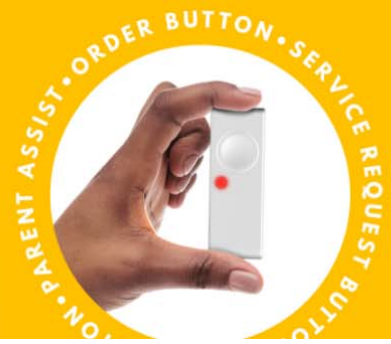


THE BUTTON 



SO MANY OPPORTUNITIES

The button can be used for various applications. You may possibly have an application that we have not even thought of. Take a look below to understand some ideas of applications we have been involved in.



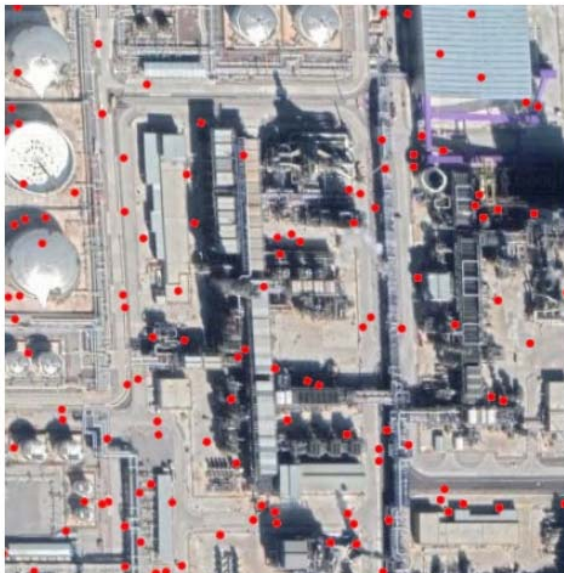
KEEPING IT SIMPLE

When people get older they often need to rely on their children to take care of them. While parents have cell phones it is not always possible for them to make a call when they are in trouble because there are too many steps involved. That's why we designed a button for that.



SECURITY AND MEDICAL SERVICES

Security companies and medical emergency services use our button because they get all the information they need when the button is pressed by one of their customers. Our technology will integrate with your existing system by using our API.



INDUSTRIAL PLANT SOLUTIONS

Buttons can be permanently and strategically placed throughout an entire plant or large factory environment.

This button can be pressed by any worker or staff member to quickly log a support or maintenance request or to report a Health and Safety or Security Emergency. By pressing the button, we can provide the precise location (indoor and outdoor).

The button can transmit 3 different message types depending on if there is a single press; double press or long-press. In addition to this, the button contains temperature monitoring which will automatically send an alert based on temperature exceptions.

All alerts can be passed to a team that will receive all notifications instantly either via SMS / Email or Mobile app or via an API into an existing system.

THE BUTTON



PRODUCT ORDERING

Buttons can be labelled to allow standard stock items and quantities to be ordered with one press of the button. When stocks are running low in your organization, the person who identifies this can easily press a button instead of going through a detailed ordering process.



BLOOD SAMPLES

Pathology companies provide our button to doctors and nurses in public and private practice to have blood samples or specimens collected. Thus, reducing call center costs and customer frustration. When the button is clicked, the pathology company knows exactly when the request came in and their driver can be notified.



MACHINES SERVICE

Warehouses and factories often need equipment to be checked out during the course of a day especially when machines are preventing the production line from moving forward. You can position the button in various points throughout your production line which will notify maintenance personnel to immediately correct the problem. In addition you can get statistics to understand what areas of the business need to be streamlined.



SECURITY GUARD - KEEP ALERT

Place the button in specific locations to make sure your security guard is patrolling. Reporting is available which can be sent to your security company to ensure guards are awake on the job. This service is available to security companies; private companies and neighborhood watch.